

TUBE FURNACES

standard equipment

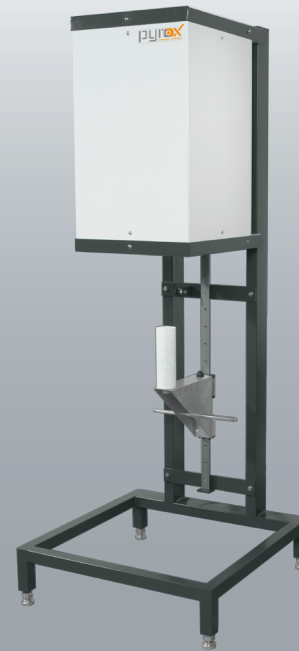
The furnace comes with :



- Separate electrical cabinet
- Eurotherm controller
- Ceramic thermocouples (K,S,B) according to temperature

options

- Work tube in ceramic, quartz or sic quality
- 3 independent thermal zones
- Independent overheating security thermocouple
- Insulation plugs at each end
- Vertical frame support
- Operates under atmosphere (including airtight tube and clamp)
- Operates under vacuum (including pump and gauge)
- Vacuum system
- Temperature recording
- Manual loading arm
- Automatic loading
- Split furnace



technical characteristics

	Internal diameter (mm)		Reference	Heating length (mm)	External dimensions (mm)			Power (kW)	Supply (V)
	Furnace	Tube			Length	Width	Height		
HORIZONTAL									
1250°C	65	50	TH1265	400	450	200	260	2,2	230
	90	70	TH1290	500	550	300	380	3	230
1500°C	60	50	TH1560	300	600	550	700	4	230
	80	70	TH1580	500	900	600	750	6	400x3
1700°C	60	50	TH1760	300	600	550	700	4	230
	80	70	TH1780	500	900	600	750	6	400x3
VERTICAL									
1250°C	45	30	TV1245	225	275	160	220	1,4	230
	65	50	TV1265	400	450	200	260	2,2	230
	90	70	TV1290	500	550	300	380	3	230
1500°C	40	30	TV1540	150	450	280	350	2	230
	60	50	TV1560	200	550	350	420	3	230
	80	70	TV1580	350	700	400	480	4	230
1750°C	40	30	TV1740	150	300	300	500	3	230
	60	50	TV1760	200	350	350	600	4	230
	80	70	TV1780	350	400	400	750	7	400x3

Other dimensions available on request

Specifications and photos are not contractual, subjected to technical changes